



Distribution Amplifier

CDA-16 has been engineered to work with any existing Bowers & Wilkins custom installation speaker. With the ability to drive 16 channels or 8 zones in a compact 1U design, CDA-16 gives you the maximum performance with the minimum rack space.

The power to impress.

Ensure the best possible sound from your in-wall or in-ceiling Custom Installation loudspeakers with our powerful yet compact distribution amplifier.



Compact powerhouse.

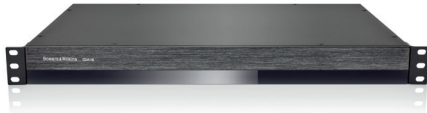
Offering 16 channels of power, the CDA-16 can enable your whole home with sound yet takes up minimal space thanks to its compact 1U design.

Mighty flexible.

CDA-16 has a configurable specification supporting bridging of its Class D stereo channels into even more powerful mono outputs when needed.



CDA-16



Audio Specifications

Load impedance range:	>3Ω per channel (>6Ω in bridge mode)
Output Power per channel, non-clipped:	>50W into 8Ω >100W into 4Ω
Output Power bridge mode, non-clipped:	>200W into 8Ω
Output Power total, all channels:	>400W short term >200W continuous average
DC offset voltage:	<50mV
Frequency Response (-3dB):	<10Hz to >50kHz, any load impedance
Frequency response accuracy 20Hz-20kHz:	±0.5dB
Signal to Noise ratio (Ref. 50W/8Ω):	>100dB A-Weighted
THD+N (1kHz, 12.5W, 4Ω):	typically 0.05%
Voltage Gain:	34.9dB to - infinity, adjustable
Input impedance:	15KΩ
Maximum input voltage:	6.8V peak (4.8V rms sine wave)
Signal sense threshold:	2.5mV (independent of Gain setting)
Wake-up time:	<0.2s (If other zones active) <2s (From all zones inactive)
Turn-off time:	15 minutes from last signal detected
12V trigger input threshold:	typically 3V (recommended input is 5-15V)

Controls & Indicators

Front panel:	1 x Power LED (unit active – White, Fault – Red) 8 x Zone status LEDs (Signal present – White, Fault – Red)
Rear panel	8 x 2-position DIP switches (link to global input) 1 x 3-position switch (power mode: on, auto detect, 12V trigger) 8 x input gain control with Clip indicator LEDs

Connectors

Input	8 x RCA (pair) Phono socket, line in (global in shared with Zone 8)
Output	1 x RCA (pair) Phono socket (global out) 8 x 5.08mm Pitch 4-way Phoenix Combicon style
12V trigger control	1 x 3.5 mm jack - 12V trigger IN 1 x 3.5 mm jack - 12V trigger OUT (Maximum 100mA pass-through)

Power

Power consumption:	<0.5W All zones inactive <45W All zones idling 300W maximum average 1,000W peak
AC supply:	100-240V 50/60Hz
AC inlet:	IEC C14, switched

Thermal

Thermal dissipation	1.7 BTU/hr (standby), 150 BTU/hr (idle), 400 BTU/hr (max)
----------------------------	---

Dimensions

Height:	44.5 mm (1.8in) 1U [55.5 mm (2.2in) plus feet]
Width:	437 mm (17.2in)
Depth:	310 mm (12.2in)

Net weight:	4.5kg (9.9lb)
--------------------	---------------

Finish	Black
---------------	-------