

DB1 SubApp Program – Download Instructions

Choose whether you want the 32-bit or 64-bit version and click on the link to start the download process. You will be given the choice to Run or Save the Setup file. If you choose Run, the Setup file will download the application and installation will start automatically.

If you choose to save the Setup file, you will be asked for a location on your computer. When download is complete, open the location to see this icon:



Double click the icon to start the installation process.

The application will install in two parts – the SubApp program itself and the SubApp Support Library. The total program size is of the order of 200MB, but most of this is the Support Library. Any future updates of SubApp will not require an update to the library and will therefore be much smaller and quicker to install.

When complete, the following shortcut will be placed on your desktop:

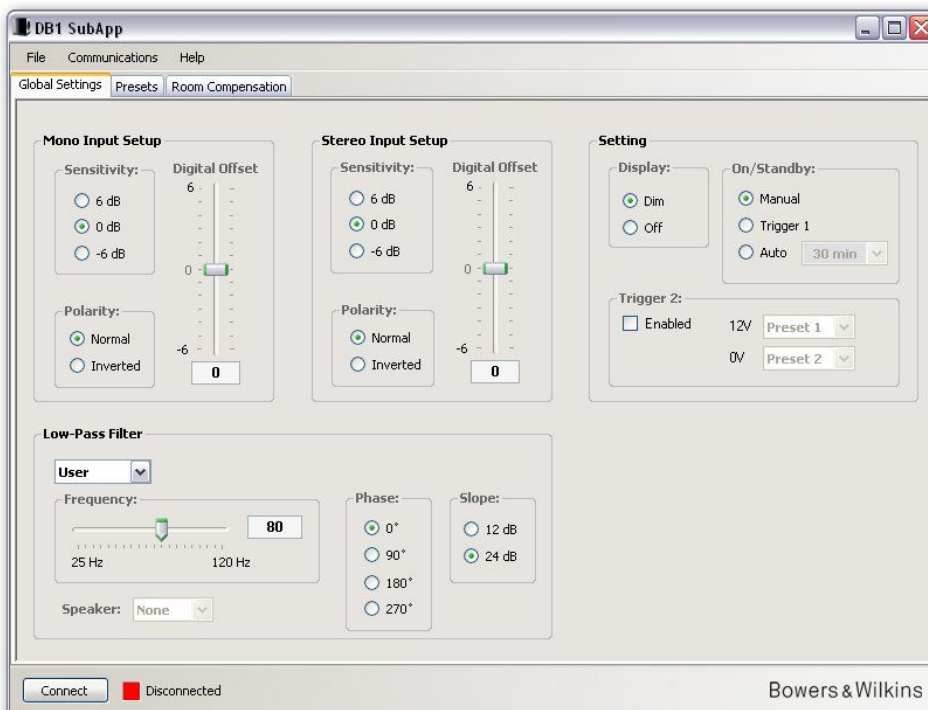


Before running the SubApp program:

1. Set up the subwoofer with all the audio connections required, but do not connect to any home automation system that requires the RS-232 port. Do not power up.
2. Connect a USB port of the PC to the RS-232 input of the subwoofer using the cable provided.
3. Power up the subwoofer.

Start the SubApp program on the PC.

The program will start on the **Global Settings** page and, if this is the first time you have used the subwoofer, the default settings will be displayed as shown below.



Read the operating instructions. These are contained in a PDF file that can be opened by navigating **Help > Contents** in the menu. The instructions are also available for download from our web site.