

Bowers & Wilkins

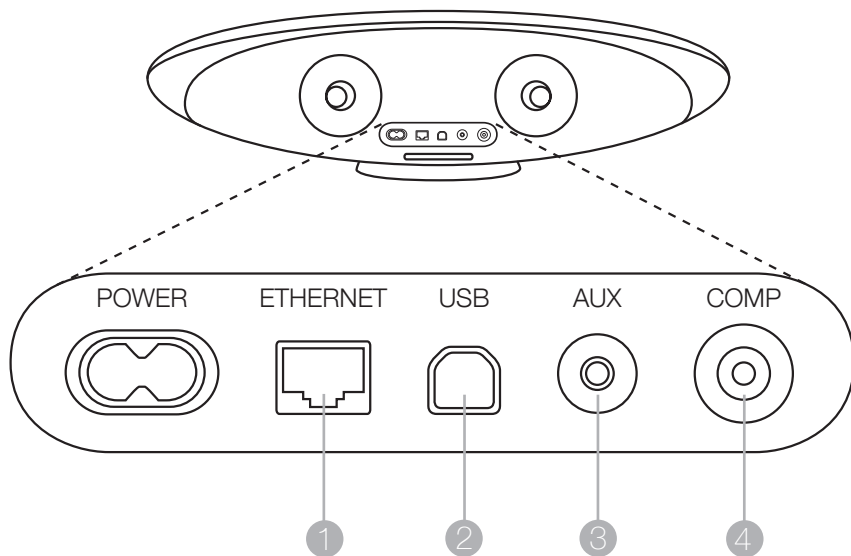
Zeppelin Air
Connectivity Guide



Zeppelin Air's rear panel connections

This guide explains how to connect your Zeppelin Air to other devices and the appropriate cables required.

Zeppelin Air's input and output connections are located on the rear panel.



1 ETHERNET

Connect Zeppelin Air direct to your network as an alternative to WiFi.

2 USB

Allows for Zeppelin Air to be used as PC or Mac speaker and enables synchronisation of your iTunes library to the docked device.

3 AUX

Combined analogue and digital 3.5mm jack provides Zeppelin Air with an audio input for a variety of devices.

4 COMP

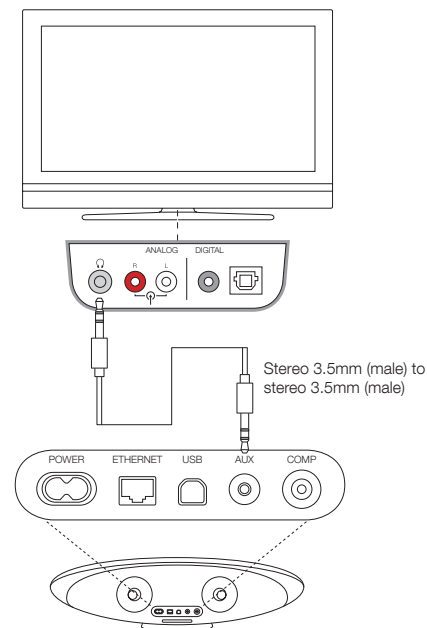
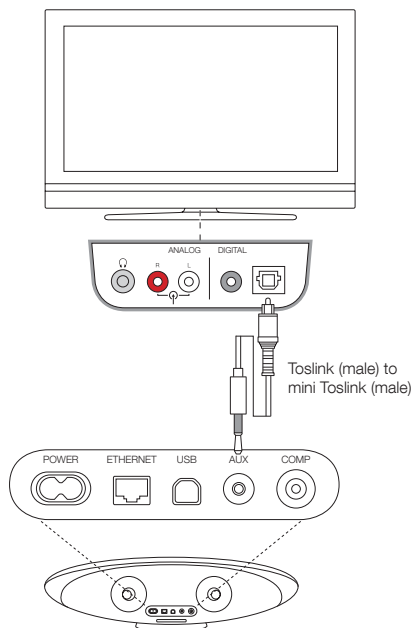
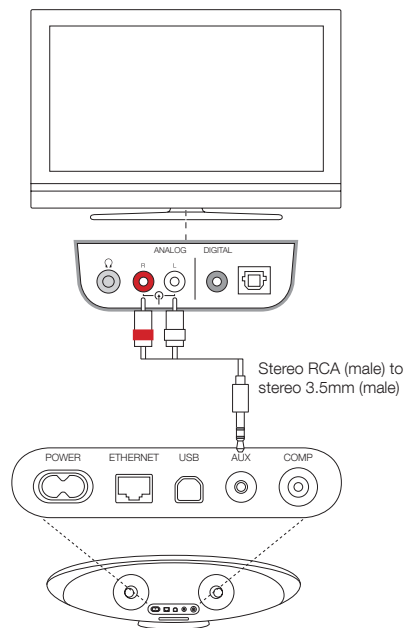
The composite video output allows for movies or TV shows (stored on compatible docked devices) to be displayed on your TV.

Using Zeppelin Air as a sound upgrade to your TV's internal speakers

Depending on your TV's audio output capabilities Zeppelin Air may be used to improve the sound of your TV. Please refer to your TV owner manual for details of the audio outputs available.

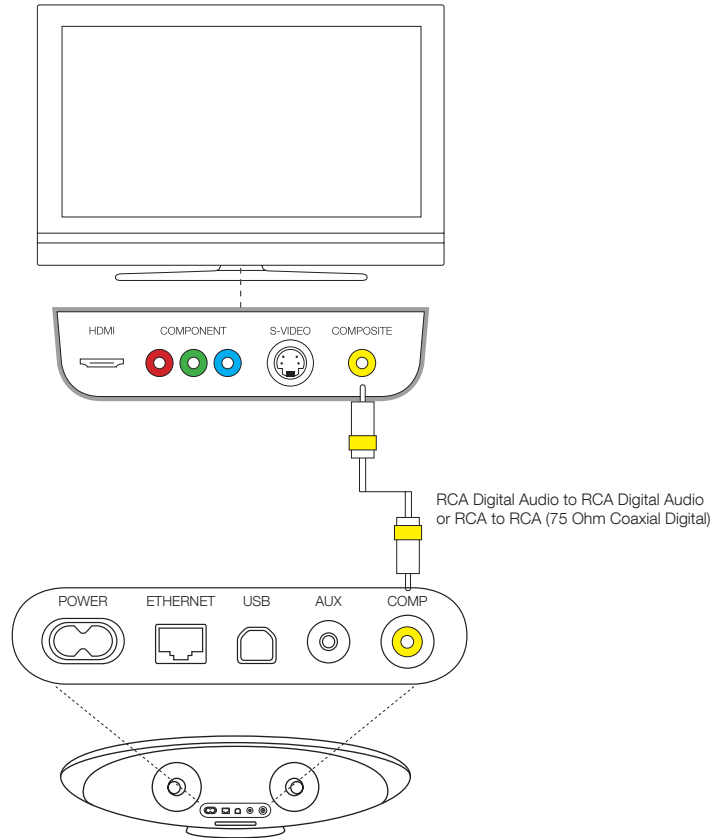
Typically, if using optical or analogue audio outputs, the TV speakers will still sound. It is therefore advised to turn down the TV speakers and adjust the volume using Zeppelin Air remote control. Alternatively, if the headphone output is used the TV's internal speakers may be bypassed, so it is recommended to set the Zeppelin Air to medium level and adjust the volume using the TV remote control.

Note: please ensure not to set the TV volume to excessive levels as this may overload the AUX input and affect sound quality.



Outputting video from Zeppelin Air to your TV

It is possible to output video content from compatible devices to your TV. Please refer to your TV owner manual for information on connecting composite video sources.

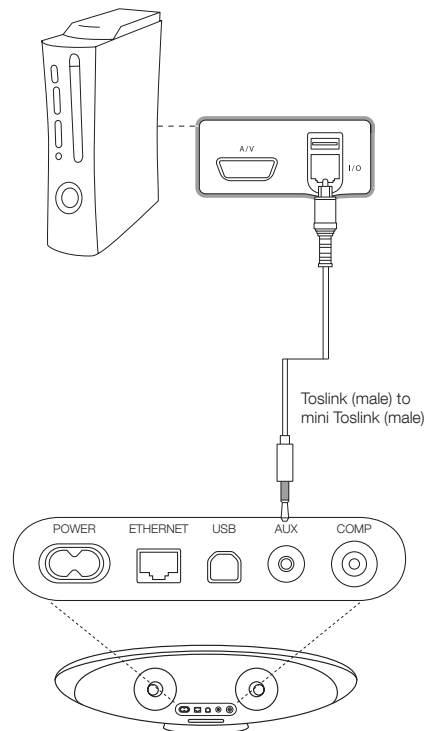
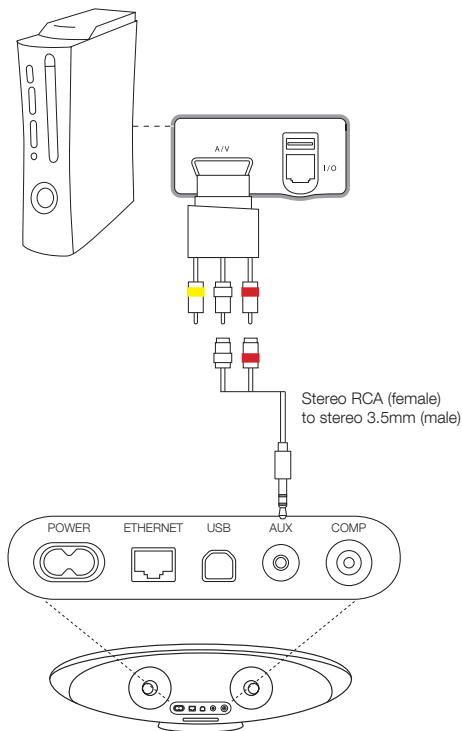
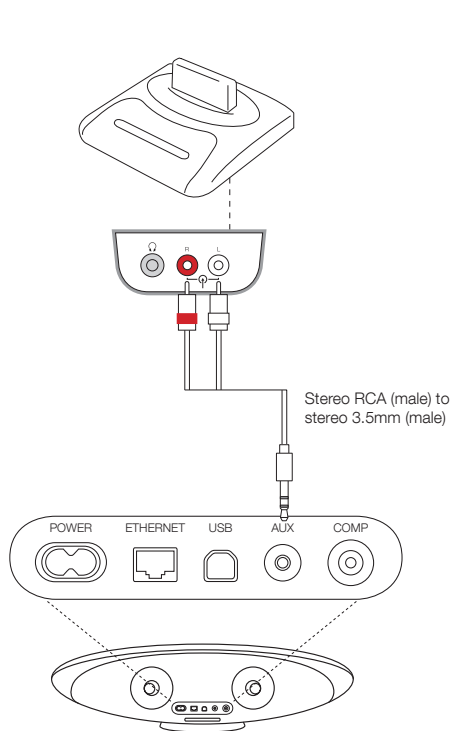


Connecting Zeppelin Air to gaming consoles

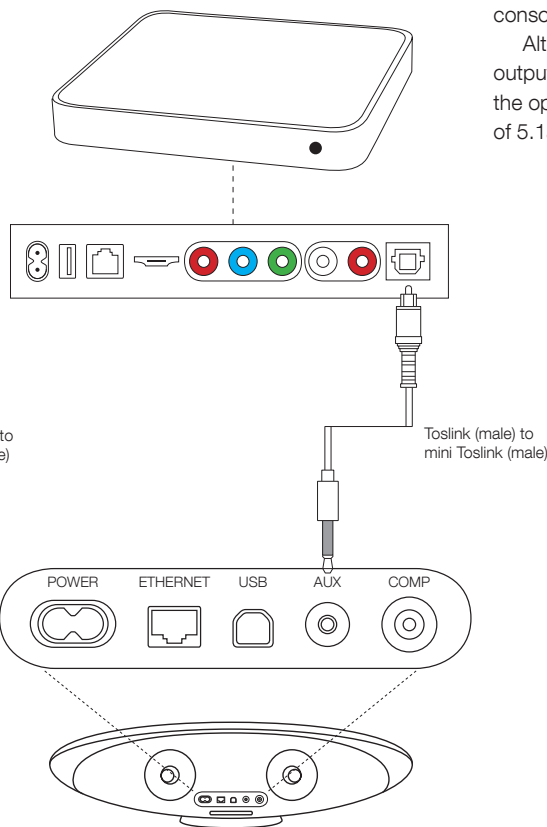
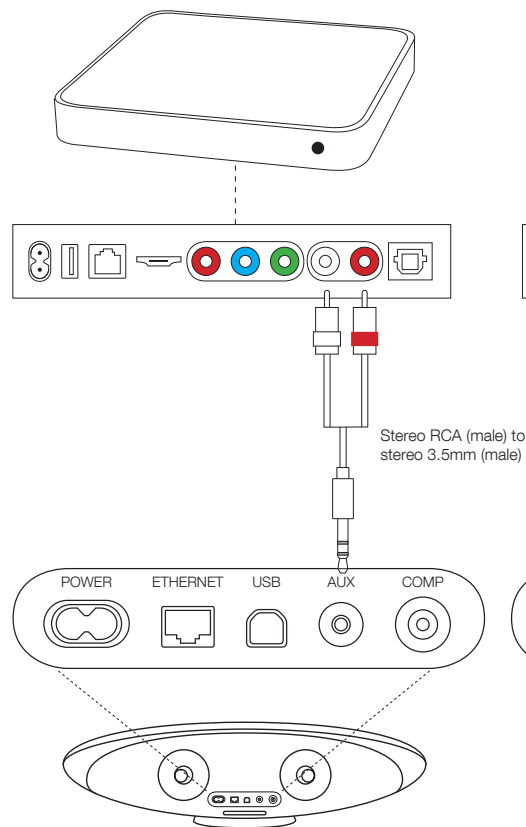
If your gaming console audio is currently heard through the TV speakers and your TV has audio output capabilities please refer to the "Using Zeppelin Air as a sound upgrade to your TV's internal speakers" section. In most cases, once connected, the selected TV input (DVD, set top box or gaming console) will be heard through Zeppelin Air.

Alternatively, you may find the following audio output on your console.

Note: the optical input on Zeppelin Air is not capable of 5.1 audio.



Connecting Zeppelin Air to TV receivers or set top boxes

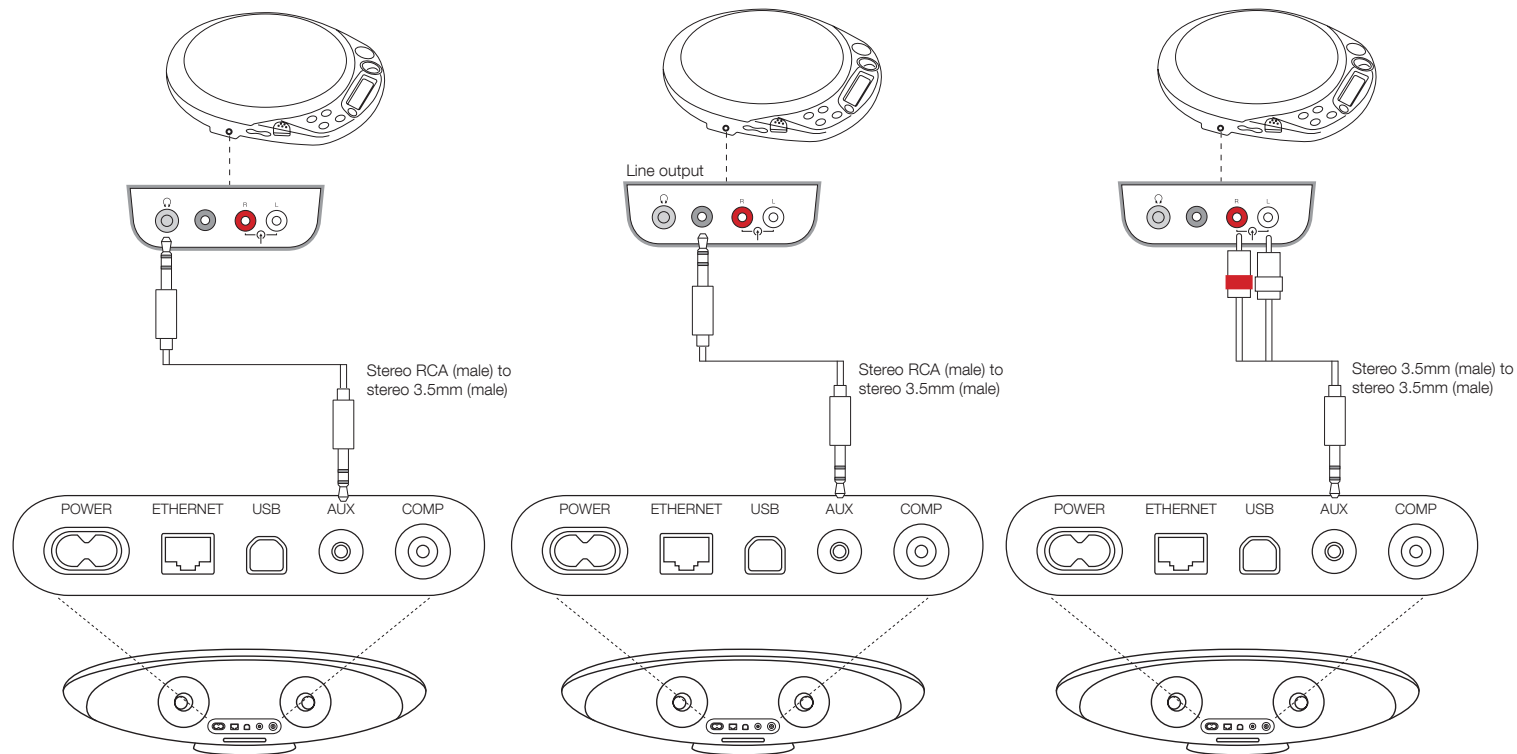


If your TV receiver or set top box audio is currently heard through the TV speakers and your TV has audio output capabilities please refer to the “Using Zeppelin Air as a sound upgrade to your TV’s internal speakers” section. Once connected the audio of selected TV input (DVD, set top box or gaming console) will be heard through Zeppelin Air.

Alternatively, you may find the following audio outputs on your TV receiver or set top box. (Note: the optical input on Zeppelin Air is not capable of 5.1 audio).

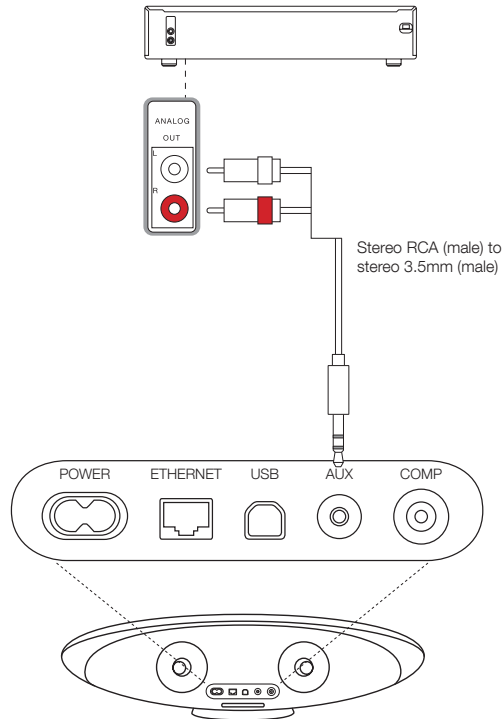
Connecting Zeppelin Air to your portable audio device

Most devices with a 3.5mm headphone output can be connected to AUX input of Zeppelin Air. If using the headphone output a volume level of around 75% should be set on the source (it is important that the volume is not excessive as this may overload the AUX input and affect sound quality). The volume level is then controlled on Zeppelin Air.

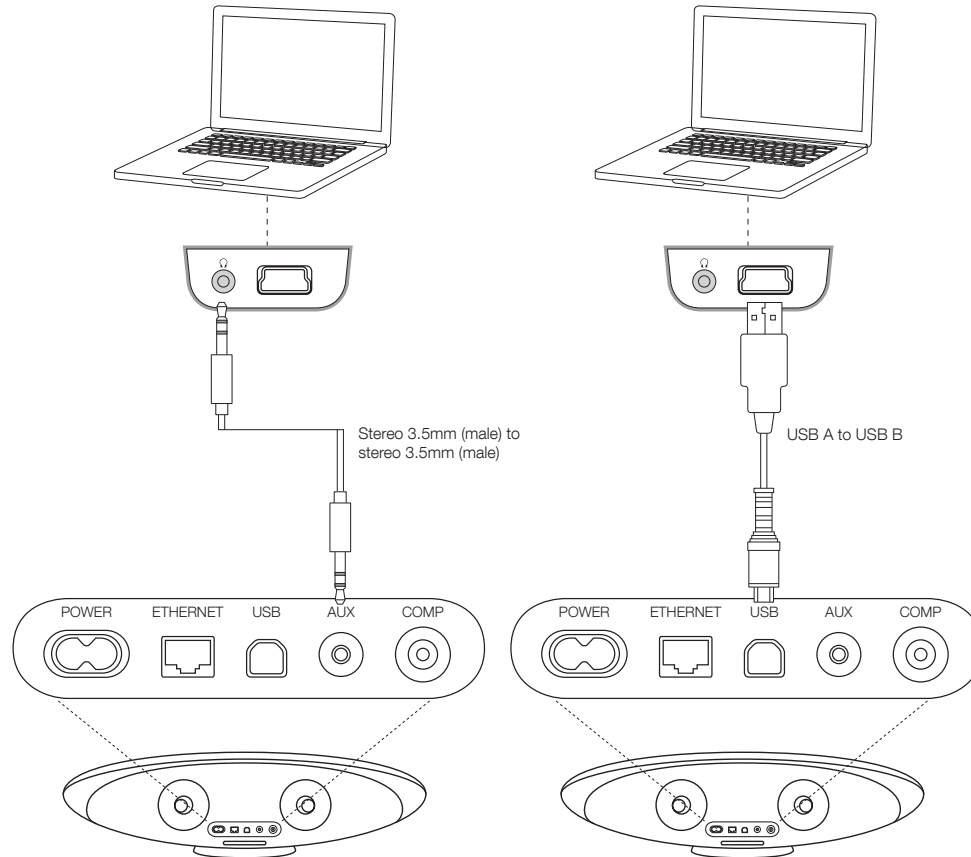


Connecting Zeppelin Air
to audio devices (CD
players, receivers and
tape players etc.)

Most separate audio devices will have an analogue
line output. Volume can be adjusted using the
controls on Zeppelin Air.



Connecting Zeppelin Air to Computers



When using USB Zeppelin Air will be recognized by the computer as an audio output

Note: When first used with a Mac or PC, it is required that the product be selected as the primary output device. Windows users will need to do this in Start->Control Panel->Sound and Audio devices. Mac users will need to press and hold the 'alt' key while clicking the speaker icon located in the top right of the navigation bar.

If a USB socket is not available you can use a headphone output. If using a headphone output set the computers output level to around 75% (it is important that the volume is not excessive as this may overload the AUX input and affect sound quality). The volume level is then controlled on Zeppelin Air.